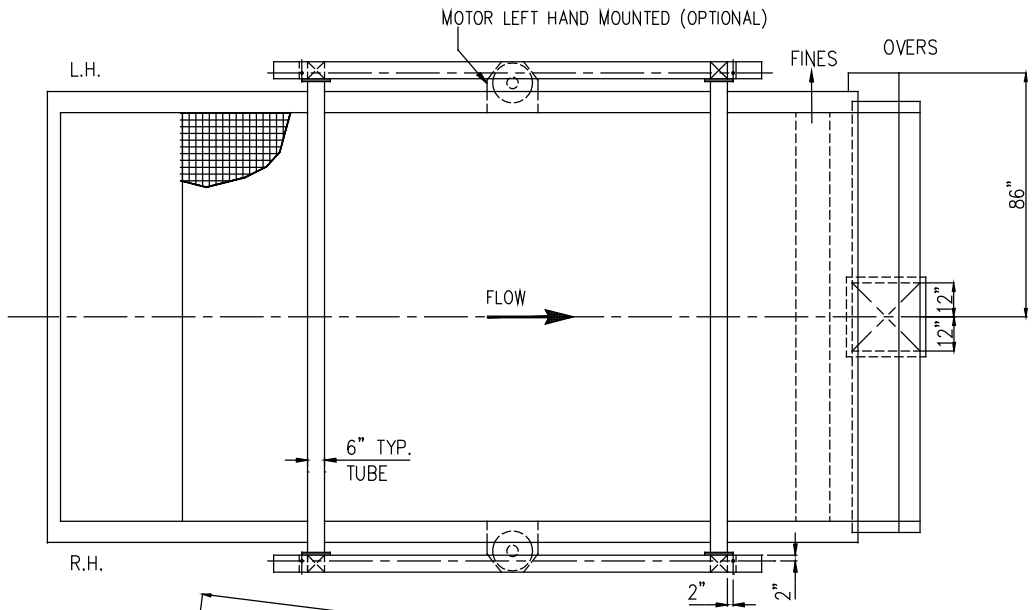
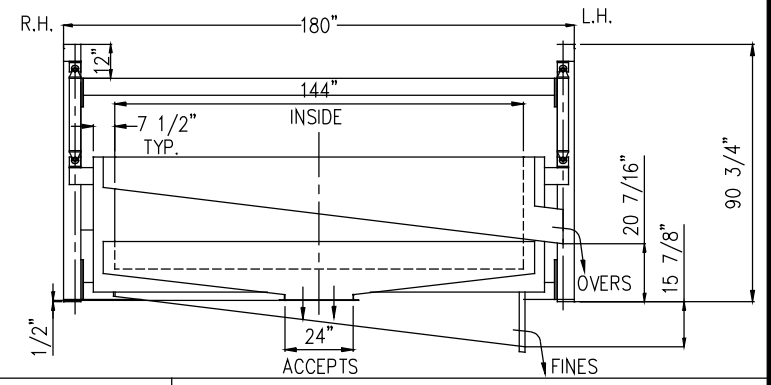
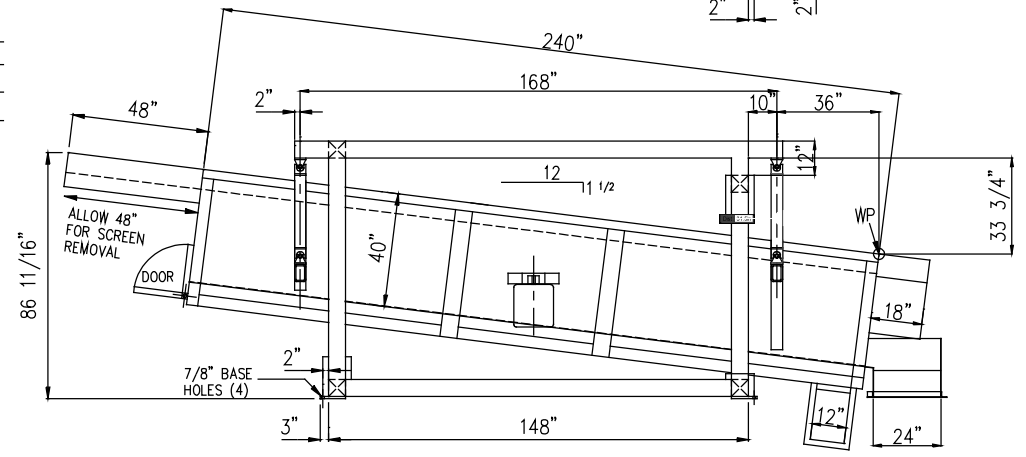


J16430

ROTOR: A9-839A A=23"



DRIVE MOTOR:
 INCLUDED
 NOT INCLUDED
 RIGHT HAND
 LEFT HAND
 HP: 15 RPM: 1800
 VOLTAGE: _____
 FRAME: _____
 MFR: _____



DESIGN CRITERIA OF SUPPORT STRUCTURES FOR BM&M SCREENS

- BM&M SCREENS GENERATE DYNAMIC AND STATIC LOADS IN THE HORIZONTAL AND VERTICAL PLANES. THESE LOADS MUST USED WHEN ENGINEERING AN INSTALLATION INTO AN EXISTING OR NEW STRUCTURE.
VERTICAL LOADS
 THE VERTICAL LOAD CONSISTS OF A STATIC LOAD (MACHINE WEIGHT PLUS PRODUCT WEIGHT) AND A REVERSING DYNAMIC LOAD.
HORIZONTAL LOADS
 THE HORIZONTAL LOAD IS A RADIAL DYNAMIC LOAD.
 MAXIMUM VERTICAL LOAD PER CORNER
 7000 LBS, STATIC
 1400 LBS, DYNAMIC, REVERSING @ 300 CYCLES/MINUTE
 MAXIMUM HORIZONTAL LOAD PER CORNER
 1000 LBS, ROTATING @ 300 CYCLES/MINUTE
- THE RESONANT FREQUENCY OF THE LOADED STRUCTURE OR ITS PARTS SHALL BE GREATER THAN 600 CYCLES PER MINUTE OR LESS THAN 150 CYCLES PER MINUTE.
- PROVIDE 6" HORIZONTAL CLEARANCE FROM STATIONARY OBJECTS.
- PROVIDE FLEXIBLE LEAD TO MOTOR.
- DISCHARGE CHUTES MAY BE LEFT OR RIGHT HANDED OR CENTRAL FOR OVERS, FINES & ACCEPTS (SEE BROCHURE). THESE MAY NOT EXTEND MORE THAN 3 FEET FROM END OF SCREEN.

SPECIFICATIONS:

	DECK #1	DECK #2
SCREEN OPENINGS	2" DIA. P. PL.	1/4" W.W.
SCREEN MATERIAL	-	-
NO. OF SECTIONS	5	5
SECTION SIZE	144 x 48	144 x 48

TOTAL MACHINE WEIGHT: 16,000 LBS
 PAINT: BM&M BLUE, EPOXY
 OPTIONS: 1. 48" LONG INFEED CHUTE
 2. HANGER LUBE SYSTEM
 3. ZERO-SPEED SWITCH, TELEMECANIQUE
 4. STAND CROSS MEMBER LOWERED

REV	DESCRIPTION	DATE	APPD
A	FOR APPROVAL	JULY 13/12	
B	GENERAL REVISIONS	JULY 20/12	
C	APPROVED FOR CONSTRUCTION	JULY 20/12	

CUSTOMER: INTERFOR, GRAND FORKS, BC
 PURCHASE ORDER: GF-831201-2
 DRAWING STATUS: FOR CONSTRUCTION

BM&M 5465 PRODUCTION BLVD
 Surrey, B.C. Canada V3S 8P6

12' x 20' 2-DECK, SCREEN, BASE MOUNTED

JOB NO. J16430	DWG NO. B9-2008	REV. C
----------------	-----------------	--------